

Keysight Technologies

Typical GPS Receiver Verification Tests Using a GPS Signal Simulator

More Application, Information, and Pricing available at:



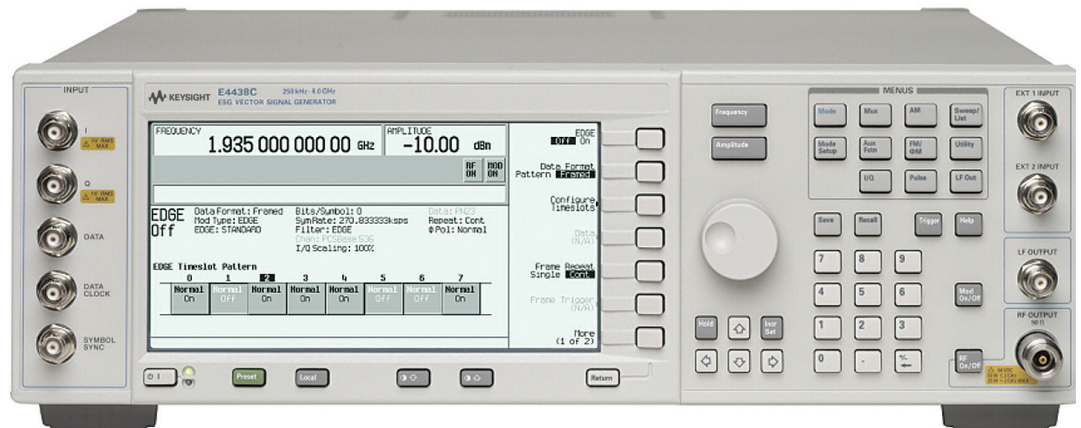
TestWorld

250 Technology Way
Rocklin, CA 95765

sales@testworld.com
1-855-200-TEST (8378)

Click to go www.TestWorld.com

Application Note





Introduction

This paper describes a set of typical GPS receiver verification tests using a GPS signal simulator. These tests are used to verify the functionality of embedded GPS receivers in mobile consumer products such as cellular phones and other handheld receivers. Using a metric grade GPS signal simulator in a GPS receiver test environment provides regulated control, easy repeatability, and maximum flexibility. In this environment, the tests listed in this paper create a standard validation procedure for the testing and verification of most GPS receivers. The flexibility of the signal source allows for testing of not only GPS receivers but other wireless formats and standards as well.

Global Positioning System (GPS) receiver technology is now commonplace in our daily lives, having penetrated our electronic world from cell phones, to personal navigation devices (PND), to cameras, to assimilation with RFID tags. The technology is rapidly expanding its reach into new areas, enlarging the ever-expanding role that GPS technology will play in our lives.

But even as GPS technology becomes more common, GPS receiver manufacturers, OEM integrators, and contract manufacturers struggle for standard tests to verify receiver performance. Verification is required both to validate GPS receiver functionality and to objectively evaluate competing GPS IC performance. Verification procedures require a controlled environment that facilitates precise repeatability. Using actual GPS satellite signals and receiving them through an antenna, in most cases, does not provide this type of environment. A realtime GPS signal simulation, generated by an RF signal source, offers an excellent starting point for creating such an environment.

As GPS receivers are incorporated into mobile consumer products such as cellular phones, it also becomes important to have a flexible test environment. The source should be flexible enough to generate not only GPS signals, but also other wireless standards.

The tests described in this paper will help in the evaluation of GPS receiver performance and will provide a validation technique for GPS products in a controlled environment.

Test Equipment

The GPS signals used for these tests were created by an Keysight Technologies E4438C ESG vector signal generator with the Option 409 GPS Personality (See Figure 1). The E4438C is a high performance, general purpose RF signal generator capable of providing many of today's wireless signal formats. The Option 409 GPS personality is also available on the E8267D PSG vector signal generator, which covers frequencies up to 44 GHz. The information in this application note also applies to the E8267D-409.

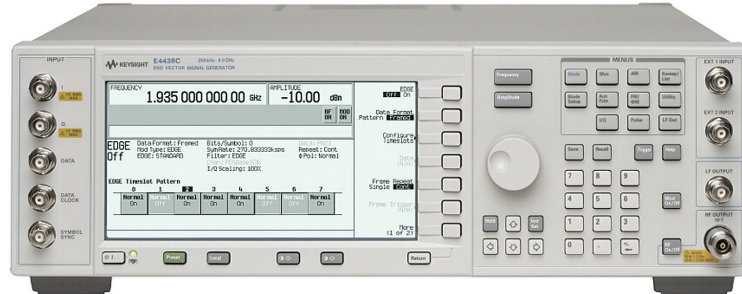


Figure 1. E4438C ESG vector signal generator

The GPS personality (E4438C or E8267D Option 409) can provide up to 8 real-world GPS satellite signals. The satellite signals are generated based upon pre-configured scenario files. These signals, including Doppler shifts, are synchronized with the actual satellite orbits so that they are consistent with the navigation message contained in the satellite signals. (See section below on scenario generation).

The GPS receiver used in the test set-ups was the U-blox AEK-4T evaluation kit with U-center software. All U-center screen captures are used in this paper with written permission from U-blox.

Option 409 GPS simulation capabilities

The user interface of the Option 409 GPS personality is shown below in Figure 2. The GPS signal simulator allows the following capabilities:

- Multi-satellite GPS configuration (maximum 8 satellites)
- Signal simulates real world scenarios (multiple scenarios available)
- Real satellite data (synchronized satellites with Doppler shifts and navigation messages)
- Adjustable number of visible satellites between 1 and 8
- Automation of waveform playback through SCPI commands
- 10baseT LAN, GPIB, and RS-232 connectivity

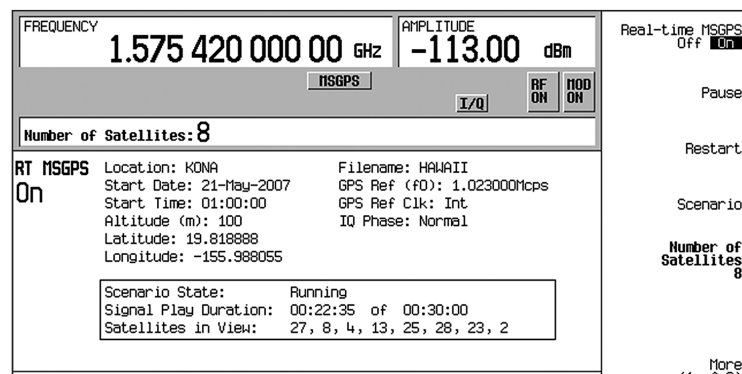


Figure 2. Option 409 GPS personality user interface

Test setup

The test setup is shown in Figure 3. The realtime GPS signal is created by the E4438C and the RF output is sent to the GPS receiver. The GPS receiver is connected to the PC through a USB cable and to the evaluation software.

The following default assumptions are made for each of the test measurements unless otherwise noted.

- No ionospheric or tropospheric range delay
- Zero clock and ephemeris error
- No multipath fading
- Time is given in UTC time
- Minimum visible satellites = 8
- Static (non moving) GPS receiver
- Specific scenario is selected from the E4438C-409 application

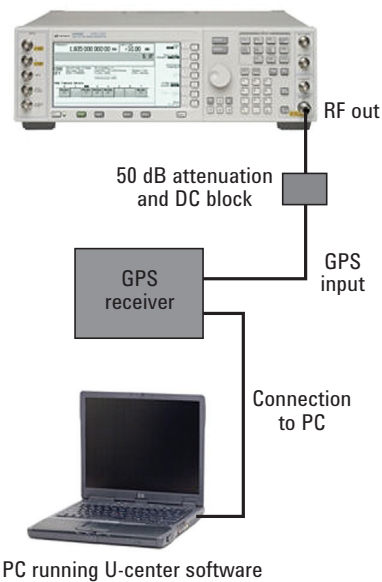


Figure 3. Test configuration

Scenario generator

Each of the scenarios for the Option 409 application is generated by the NAVSYS Corporation GPS Signal Simulation Toolbox. A script was created to generate specific satellite information based upon a given location (longitude, latitude, and altitude), specific time and period, and corresponding Yuma almanac file. The satellite information includes satellite navigation data as well as power levels and Doppler shifts for each visible satellite during that time period.

Verification of the accuracy of the scenario files was performed by NAVSYS Corporation. Actual measurements of carrier frequency and pseudo range were collected with the NAVSYS High Gain Advanced GPS Receiver (HAGR) over a period of 12 hours. A scenario file was generated using the Signal Simulation Toolbox over the same period for comparison. A comparison between simulated values and actual received signals is shown in Figure 4. The solid blue line is actual data from the HAGR. The red dashed line represents simulated data from the scenario generator. The comparisons were made for all visible satellites during the 12 hour period. Excellent accuracy between simulated and captured GPS signals was observed on all visible satellites.

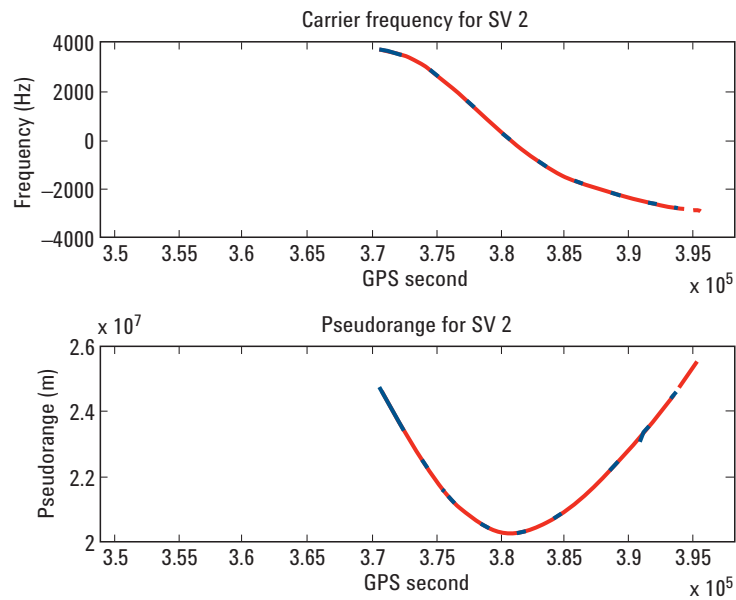


Figure 4. Scenario verification

Typical Measurement Tests

Time to first fix (TTFF)

Test objective: Measure the time required by the GPS receiver to achieve a GPS navigation fix from a cold start.

A cold start is defined as a receiver that is turned on without current ephemeris data. Typically a cold start can be achieved by a receiver that has been turned off for at least 2 hours. Most GPS receivers can also be forced to perform a cold start via software control. The TTFF is defined as the time interval between startup of the GPS receiver (power up) to the first valid navigation 3D data point derived from the simulation. The TTFF is reported by the U-center software as shown in Figure 5.

The GPS simulation is first started on the E4438C before the GPS receiver is turned on. At least 20 valid sample TTFF's should be collected. The mean, minimum, and maximum values for these samples are analyzed and the standard deviation should be computed.

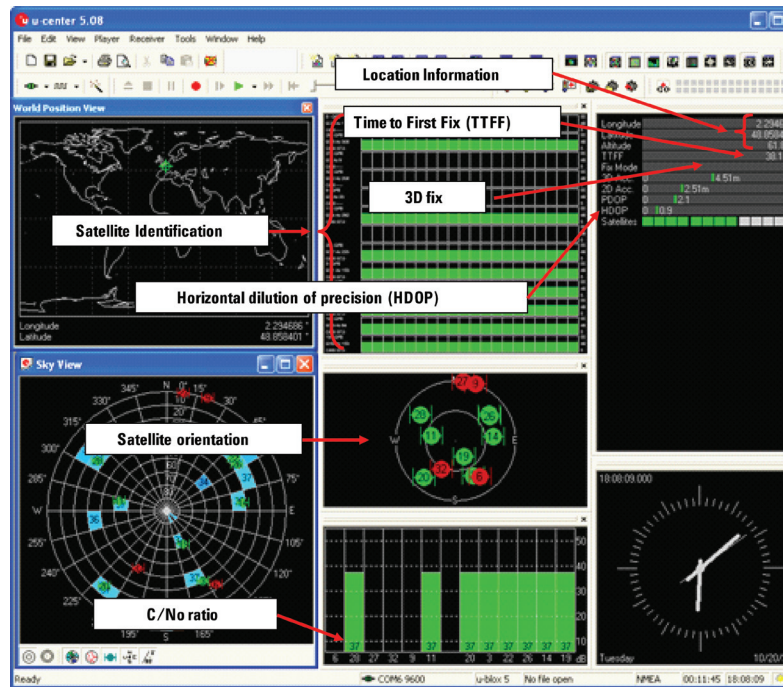


Figure 5. U-center software

Warm start time to first fix

Test objective: Measure the time required by the GPS receiver to achieve a GPS navigation fix from a warm start.

This is a similar test to the previous cold start TTFF. The receiver in this case contains current ephemeris data for all satellites in the simulation. Typically, this can be achieved by a receiver that had previously been on and then was turned off for a short period of time.

The GPS simulation is first started on the E4438C. The GPS receiver is turned on and allowed to achieve a location fix. This assures current ephemeris data in the GPS receiver. The GPS receiver is then turned off for a short period of time and then on again. The time interval from this turn-on to a valid 3D location fix is the TTFF. At least 50 valid sample TTFF's should be collected. The mean, minimum, and maximum values for these samples are analyzed and the standard deviation should be computed.

Reacquisition time

Test objective: Establish the time required to reacquire a navigation fix following a short blockage of all GPS signals during normal operation.

The method of blockage can be achieved in a number of ways. The two most common ways would be to attenuate the signal by inserting an attenuation of at least 60dB in the feed line or simply to disconnect the feed line from the simulator to the receiver. Measurement data is similar to the TTFF measurements.

The GPS simulation is first started on the E4438C. The GPS receiver is turned on and allowed to achieve a location fix. The GPS signal (RF cable) is then disconnected from the input of the GPS receiver to simulate a short blockage of the signal. The signal is then reconnected. The reacquisition time is the interval between the reconnection of the GPS signal and first valid navigation data point derived from the simulation. At least 50 valid reacquisition samples should be collected. The mean, minimum, and maximum values for these samples are analyzed and the standard deviation should be computed.

Static navigation accuracy

Test objective: Establish the accuracy of the receiver location fix with respect to the simulated location.

In this test, a static (non moving) scenario is used as the GPS simulated signal.

The GPS simulation is first started on the E4438C. The GPS receiver is turned on and allowed to achieve a location fix. Typical GPS evaluation software provides location fix information. This data, usually longitude, latitude, and altitude information, can be converted to Earth Centered Fixed Cartesian coordinates (ECEF) for evaluation of the simulated versus GPS receiver calculated locations. See Figure 5 for typical location information.

Radio frequency interference

Test objective: Establish the ability of the GPS receiver to operate in the presence of interfering (jamming) signals that may be received through its input.

In this test, the jamming signal power level is increased in 1 dB increments until the first degradation of the GPS receiver is noticed. This is typically a dropped satellite. The jamming signal power level is again slowly increased until the GPS receiver loses its 3D navigation fix. See Figure 6 for test setup.

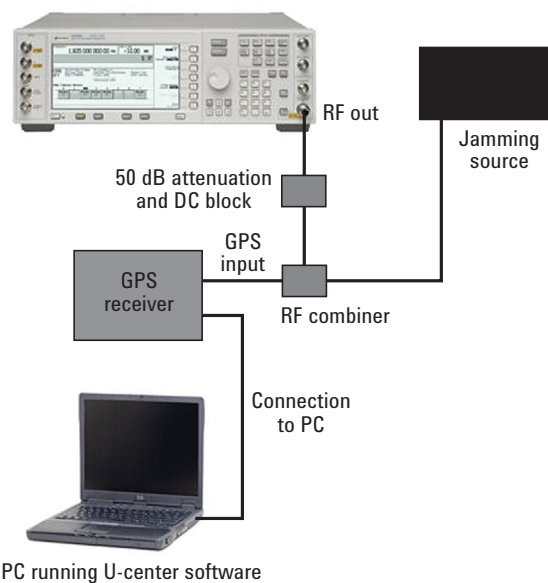


Figure 6. RF Interference Test Configuration

The GPS simulation is first started on the E4438C. The GPS receiver is turned on and allowed to achieve a location fix. The jamming signal is then added to the GPS signal at a level that is discernible to the GPS receiver. The jamming signal is increased in 1 dB steps. Typical data collected for this test are shown below in Table 1.

Table 1. Data for interference testing

1st satellite loss threshold (dB)	3D navigation loss threshold (dB)	Jammer center frequency	Jammer bandwidth
--------------------------------------	--------------------------------------	----------------------------	---------------------

Receiver sensitivity

Test objective: Verify receiver sensitivity by measuring signal strength (C/No) under various GPS signal power levels.

To obtain an accurate power level for a GPS satellite signal, the number of visible satellites should be set to 1 on the E4438C-409 application. The power level on the front panel of the E4438C will then accurately reflect the total power in the single satellite signal.

The GPS simulation is first started on the E4438C. The power level on the E4438C is set such that the GPS receiver can identify the single GPS satellite signal. The power level of the GPS satellite signal is then decreased until the GPS receiver loses tracking of the single satellite. This power level and the corresponding GPS receiver C/No ratio should be collected as data.

Another receiver sensitivity test is to measure the power level and C/No ratio level at which 3D location fix is lost. This requires a minimum of 4 satellite GPS simulation. In this test, the GPS simulation is started on the E4438C with all 8 satellites visible. The GPS receiver is turned on and allowed to achieve a location fix. The power level of the E4438C is then decreased until the 3D location fix is lost. Again the power level and the corresponding GPS receiver C/No ratio are collected as data.

Note: For information on sample sizes, statistical data analysis, and specific test methodology see ION STD-101 "Recommended Test Procedures For GPS Receivers", 27 January 1997.

Summary

The ability to reproduce GPS signals easily and accurately with a high performance RF source allows great flexibility in creating a test environment for evaluating GPS receivers. Although the tests mentioned in this paper are not all-encompassing, they can be used as a basis for verification of GPS receivers. The characteristic performance information gathered from these tests will allow verification of GPS receiver performance and comparisons between them. The test equipment used is all standard Consumer off-the-shelf (COTS) equipment and is easily modified to suit changing test requirements.

Bibliography

ION STD 101: Recommended Test Procedures for GPS Receivers, Revision C, Institute of Navigation, 1997 (ISBN: 0936406046)

Reference Literature

Keysight E4438C ESG Vector Signal Generator Configuration Guide, Literature number 5988-4085EN
Keysight GPS Personality for the E4438C ESG and E8267D PSG Vector Signal Generators Option 409, Technical Overview, Literature number 5988-6256EN

For more information, please visit:
www.keysight.com/find/gps
www.keysight.com/find/e4438c
www.keysight.com/find/e8267d

myKeysight



myKeysight

www.keysight.com/find/mykeysight

A personalized view into the information most relevant to you.

Three-Year Warranty

www.keysight.com/find/ThreeYearWarranty

Keysight's commitment to superior product quality and lower total cost of ownership. The only test and measurement company with three-year warranty standard on all instruments, worldwide.

Keysight Assurance Plans

www.keysight.com/find/AssurancePlans

Up to five years of protection and no budgetary surprises to ensure your instruments are operating to specification so you can rely on accurate measurements.

www.keysight.com/quality

Keysight Technologies, Inc.
DEKRA Certified ISO 9001:2008
Quality Management System

Keysight Channel Partners

www.keysight.com/find/channelpartners

Get the best of both worlds: Keysight's measurement expertise and product breadth, combined with channel partner convenience.

ATCA®, AdvancedTCA®, and the ATCA logo are registered US trademarks of the PCI Industrial Computer Manufacturers Group.

www.keysight.com/find/gps

www.keysight.com/find/e4438c

www.keysight.com/find/e8267d

For more information on Keysight Technologies' products, applications or services, please contact your local Keysight office. The complete list is available at: www.keysight.com/find/contactus

Americas

Canada	(877) 894 4414
Brazil	55 11 3351 7010
Mexico	001 800 254 2440
United States	(800) 829 4444

Asia Pacific

Australia	1 800 629 485
China	800 810 0189
Hong Kong	800 938 693
India	1 800 112 929
Japan	0120 (421) 345
Korea	080 769 0800
Malaysia	1 800 888 848
Singapore	1 800 375 8100
Taiwan	0800 047 866
Other AP Countries	(65) 6375 8100

Europe & Middle East

Austria	0800 001122
Belgium	0800 58580
Finland	0800 523252
France	0805 980333
Germany	0800 6270999
Ireland	1800 832700
Israel	1 809 343051
Italy	800 599100
Luxembourg	+32 800 58580
Netherlands	0800 0233200
Russia	8800 5009286
Spain	0800 000154
Sweden	0200 882255
Switzerland	0800 805353
	Opt. 1 (DE)
	Opt. 2 (FR)
	Opt. 3 (IT)
United Kingdom	0800 0260637

For other unlisted countries:
www.keysight.com/find/contactus
(BP-07-01-14)