

Simplify Multiple Bias Voltage Sequencing and Ramping for PC Motherboard Test

Application Note 1504

Description

It is vital that multiple bias voltages powering PC motherboard assemblies are correctly sequenced, usually within milliseconds, for the assembly to function correctly at turn-on. Not only can incorrect sequencing can lead to the assembly not starting up, it can also induce current latch up causing subsequent damage.

Problem

Sequencing and ramping multiple bias voltages to specified timing conditions during test is difficult or impossible to do with separate programmable system power supplies. Even most conventional multiple-output system power supplies do not adequately address this need.

Solution

Agilent Technologies N6700 Modular Power System incorporates several features ideally suited for sequencing and ramping multiple bias voltages during test:

- The N6700A-B mainframe holds up to 4 output modules in a 1-U package for high system density.
- Programmable precision delay and slew rate controls for each output provide exacting output voltage sequencing and ramping within a mainframe.
- Fast (< 1 ms) command processing time provides a simple means to sequence additional outputs across multiple mainframes. Alternately the hardware trigger system can be used to synchronize multiple mainframes.

- The N673xB 50W and N674xB 100 W, 5 V to 100 V basic power modules are economical choices when the primary focus is powering the PC motherboard.
- Up to four identical power modules can be paralleled and operated as a virtual single output for greater current and power.

ATX PC Motherboard Bias Voltage Requirements

A 160 W ATX power supply output voltages and currents are given in Table 1. The PC motherboard itself draws only a portion of the total power; the rest is used to power the drives, peripherals, and other PC components.

More Application, Information, and Pricing available at:



250 Technology Way
Rocklin, CA 95765

sales@testworld.com
1-855-200-TEST (8378)

Click to go www.TestWorld.com



Agilent Technologies

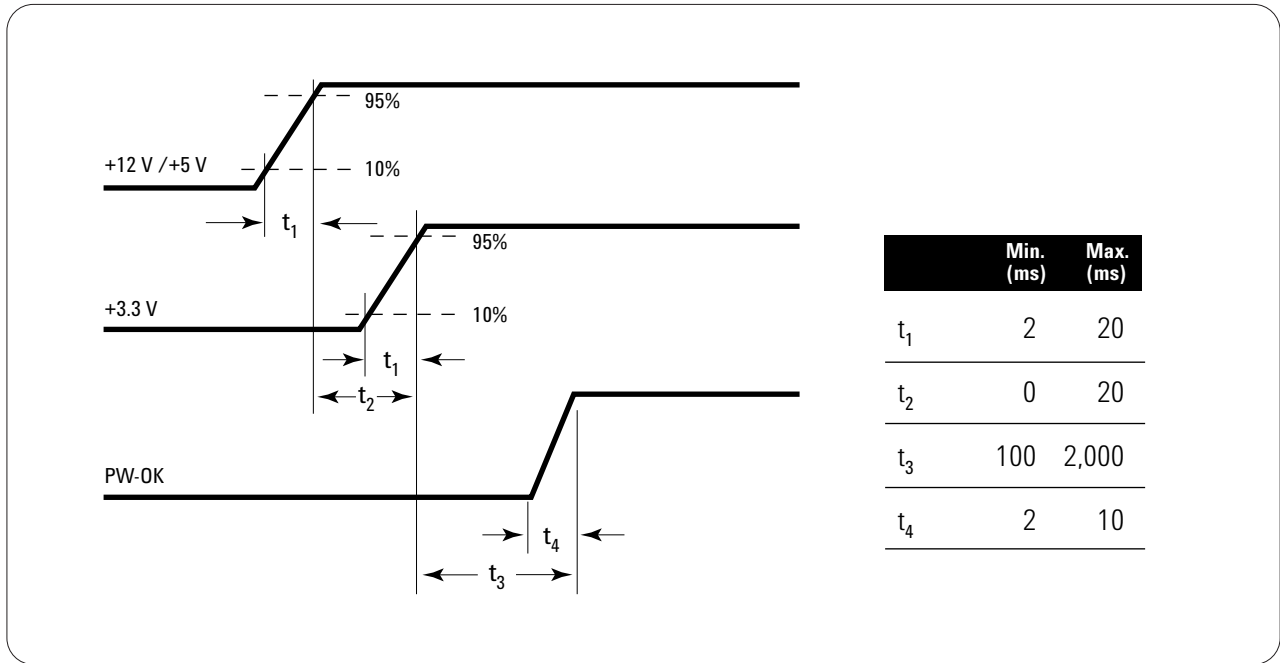


Figure 1. ATX Power Supply Power-on Output Sequencing Requirements

The ATX motherboard standards specify the positive outputs and Power-OK signal be brought up with a certain sequence and rise times, as outlined in Figure 1.

| Output | Min. Current (amps) | Max Current (amps) | Peak Current (amps) |
|----------------|---------------------|--------------------|---------------------|
| +12 VDC | 0.0 | 6.0 | 8.0 |
| +5 VDC | 1.0 | 18.0 | |
| +3.3 VDC | 0.3 | 14.0 | |
| -5 VDC | 0.0 | 0.3 | |
| -12 VDC | 0.0 | 0.3 | |
| +5 VDC standby | 0.0 | 1.5 | 2.5 |

Table 1: 160 W ATX Power Supply Outputs

Bias Voltage Sequencing and Ramping Solution

The configuration for bias voltage sequencing and ramping during test is shown in Figure 2. Due to the N6700 Modular Power System's flexibility the location of each output is not critical. The + and - output pairs were grouped together in a mainframe for ease of bringing them up simultaneously. The mainframe digital I/O port provided a convenient means of generating the PW-OK output signal without any extra equipment. An extra slot is available in each of the mainframes for adding another module. This could be used as another output or paralleled with an existing output for greater power, if desired.

Results

Agilent Technologies N6700 Modular Power System readily addresses the need for sequencing and ramping multiple bias voltages powering PC motherboard assemblies during test. The assembly can now be correctly tested to its specified bias voltage timing with millisecond accuracy. In addition it is also now possible to determine the assembly's

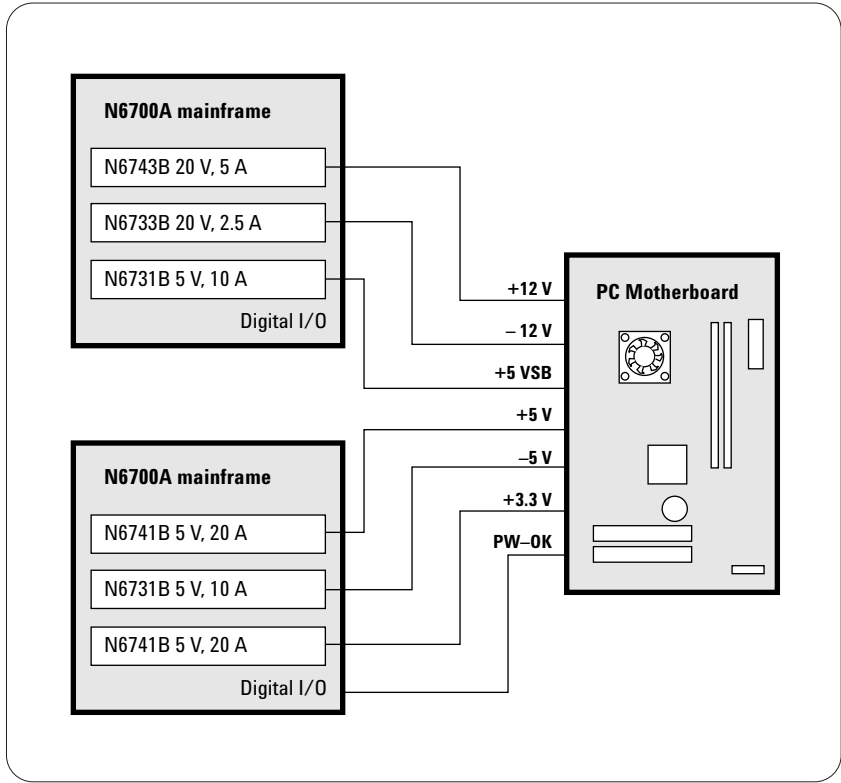


Figure 2. PC Motherboard Bias Voltage Sequencing and Ramping Solution

sequencing and ramping limits by making timing changes in sequence and slew rates of the multiple bias voltages.

Related Applications

- PC peripheral boards
- Base station Control Radio Interface Frame (CRIF) boards
- Digital radio Network Interface Units

Agilent Technologies' Test and Measurement Support, Services, and Assistance

Agilent Technologies aims to maximize the value you receive, while minimizing your risk and problems. We strive to ensure that you get the test and measurement capabilities you paid for and obtain the support you need. Our extensive support resources and services can help you choose the right Agilent products for your applications and apply them successfully. Every instrument and system we sell has a global warranty. Support is available for at least five years beyond the production life of the product. Two concepts underlie Agilent's overall support policy: "Our Promise" and "Your Advantage."

Our Promise

Our Promise means your Agilent test and measurement equipment will meet its advertised performance and functionality. When you are choosing new equipment, we will help you with product information, including realistic performance specifications and practical recommendations from experienced test engineers. When you receive your new Agilent equipment, we can help verify that it works properly and help with initial product operation.

Your Advantage

Your Advantage means that Agilent offers a wide range of additional expert test and measurement services, which you can purchase according to your unique technical and business needs. Solve problems efficiently and gain a competitive edge by contracting with us for calibration, extra-cost upgrades, out-of-warranty repairs, and onsite education and training, as well as design, system integration, project management, and other professional engineering services. Experienced Agilent engineers and technicians worldwide can help you maximize your productivity, optimize the return on investment of your Agilent instruments and systems, and obtain dependable measurement accuracy for the life of those products.



Agilent Email Updates

www.agilent.com/find/emailupdates

Get the latest information on the products and applications you select.

Agilent T&M Software and Connectivity

Agilent's Test and Measurement software and connectivity products, solutions and developer network allows you to take time out of connecting your instruments to your computer with tools based on PC standards, so you can focus on your tasks, not on your connections. Visit **www.agilent.com/find/connectivity** for more information.

For more information on Agilent Technologies' products, applications or services, please contact your local Agilent office. The complete list is available at:

www.agilent.com/find/contactus

Phone or Fax

United States:

(tel) 800 829 4444

(fax) 800 829 4433

Canada:

(tel) 877 894 4414

(fax) 905 282 6495

China:

(tel) 800 810 0189

(fax) 800 820 2816

Europe:

(tel) 31 20 547 2111

Japan:

(tel) (81) 426 56 7832

(fax) (81) 426 56 7840

Korea:

(tel) (080) 769 0800

(fax) (080)769 0900

Latin America:

(tel) (305) 269 7500

Taiwan:

(tel) 0800 047 866

(fax) 0800 286 331

Other Asia Pacific Countries:

(tel) (65) 6375 8100

(fax) (65) 6755 0042

Email: tm_ap@agilent.com

Product specifications and descriptions in this document subject to change without notice.

© Agilent Technologies, Inc. 2004

Printed in USA, October 22, 2004

5989-1676EN



Agilent Technologies